



MEN POLOS

STANLEY DEDICATOR LONG SLEEVE



STPM508

The men's long sleeve polo

Piqué
100% Organic ring-spun combed cotton
230 GSM

- Set-in sleeve
- Flat knit rib on collar
- Inside herringbone back neck tape
- Front placket with 2 buttons in matching body colour
- Slit at side seams with herringbone facing
- Single needle topstitch at shoulder seams
- 1x1 rib at sleeve hem
- Bottom hem with wide double topstitch
- Back length is longer than front length

WHITES



WHITE

COLORS



BLACK

ANTHRACITE

FRENCH NAVY

ESSENTIAL HEATHERS

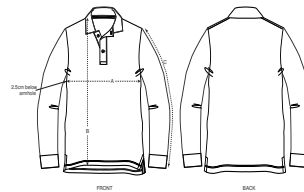


HEATHER GREY

MEDIUM FIT

S	M	L	XL	XXL	XXXL
---	---	---	----	-----	------

Size guide

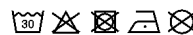


SIZES		S	M	L	XL	XXL	XXXL
A	Half Chest	49	52	55	58	61	64
B	Body Length	70	72	74	76	78	81
C	Sleeve Length	66	67.5	69	70.5	72	72

Printing Specifications

For suitable print techniques, please download our printing guide

Wash similar colours together, do not iron on print, wash and iron inside out.



STANLEY/STELLA